

COVID-19 Vaccine

K-12 Schools and Child Care

R. Nicholas Staab, MD MSPH

Medical Epidemiologist



Maricopa County
Department of Public Health

WeArePublicHealth.org twitter.com/Maricopahealth facebook.com/MCDPH

Agenda



- What is warp speed and how do we know the vaccine is safe?
- What is the COVID-19 vaccine and how does it work?
- What are the side effects?
- Who can get it?
- What is our plan to get vaccine into the population?
- How can you get it?
- Q&A

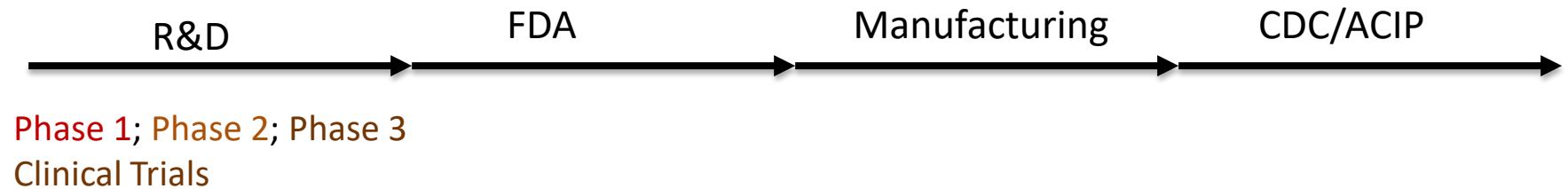
COVID-19 Vaccination

What is Warp Speed?

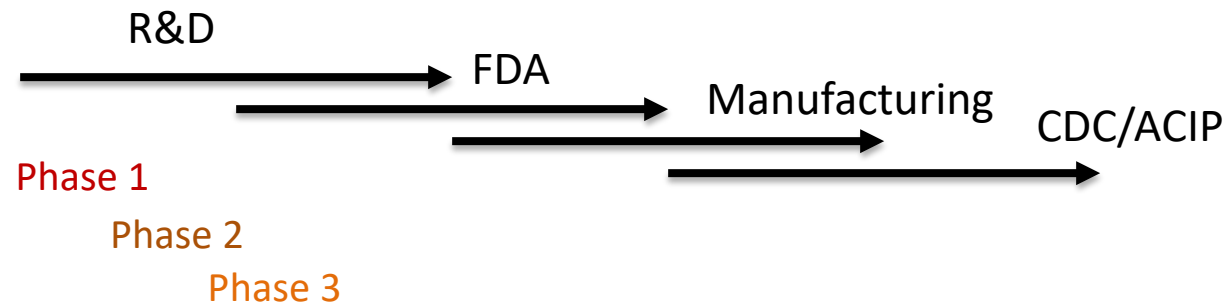


- No steps were skipped

— Traditionally



— Now

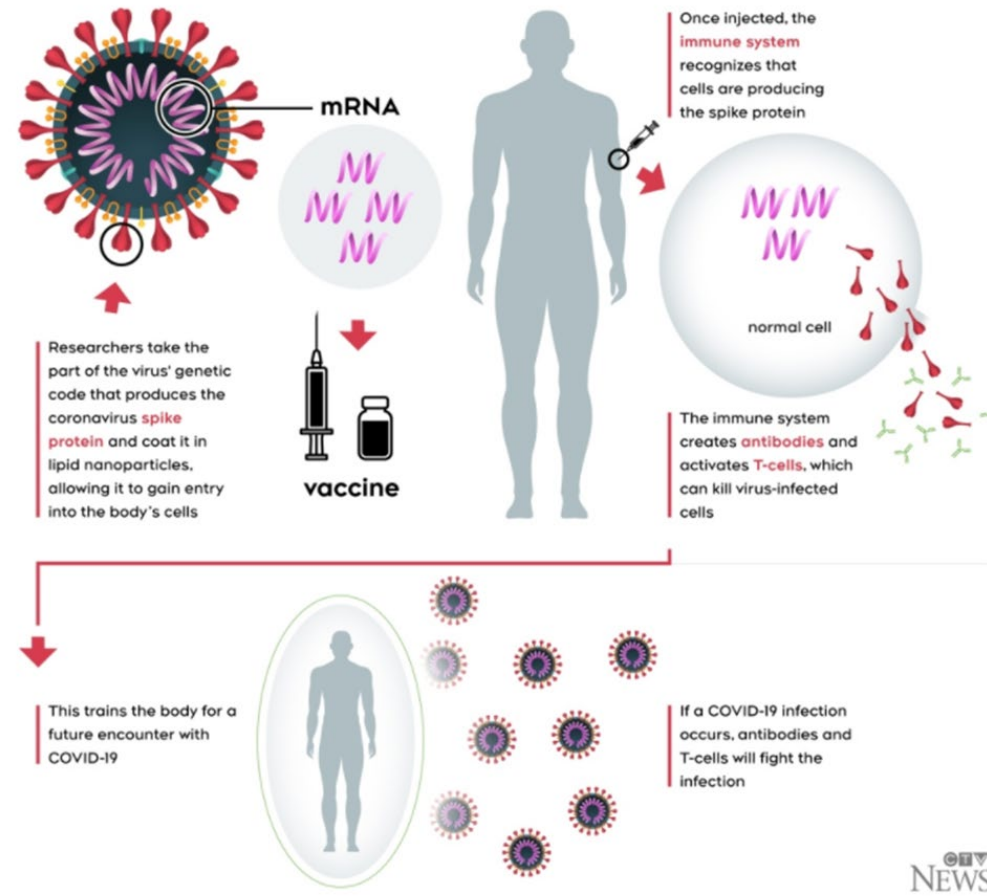


COVID Vaccine Approval and Prioritization



- FDA evaluates safety and efficacy; independent review panel makes recommendation to FDA → awards emergency use authorization
- Advisory Committee on Immunization Practices (ACIP), an independent committee under CDC organization, reviews EUA and makes recommendation for prioritization and administration
- AZ Vaccine and Antiviral Prioritization Advisory Committee (AZ-VAPAC) reviews EUA and ACIP recommendations and makes recommendations for AZ
- MCDPH plans for allocation and administration of vaccine according to EUA, ACIP, AZ-VAPAC and local independent review

mRNA Vaccines



COVID-19 Vaccines: Pfizer and Moderna



- Both authorized vaccines are mRNA vaccines
 - They do NOT contain the complete virus or the complete viral genome
 - They do contain a segment of the viral genome that makes the recipient's body generate an immune response as if it encountered the live virus
 - This results in the immune system creating antibodies to the virus without becoming infected first

Pfizer-BioNTech Vaccine



- Received FDA EUA December 11
- Highly effective (95%)
- Requires 2 doses (**minimum** 21 days apart)
- Available to individuals 16 years and older
- Needs ultra-cold storage and comes in 1000 dose batches
- That's why we need these large regional PODs

Moderna Vaccine



- Received FDA EUA December 18
- Highly effective (>90%)
- Requires 2 doses (**minimum** 28 days apart)
- Available to individuals 18 years and older
- Can be stored in standard freezer and allocated in smaller quantities than Pfizer vaccine
- This vaccine is better suited for smaller school/district PODs

Both Vaccines



- Not approved for use in youth under
 - Age 16 (Pfizer)
 - Age 18 (Moderna)
- Second doses given later than the MINIMUM interval still work
- Vaccine does not have live virus
 - It does not cause COVID
 - You cannot spread infection from getting the vaccine
 - It is possible to get COVID infection, especially before 2nd dose

Vaccine “Side Effects”



- “Side Effects” are expected & evidence that the vaccine is working
- When the body’s immune system mounts a response to a natural infection OR vaccination the result is local and/or systemic inflammation
- Local inflammation includes injection site soreness, redness, swelling
- Systemic inflammation includes fever, muscle aches, headache

Vaccine Side Effects



- The stronger the immune response, the stronger the side effects
- The healthier the individual, the stronger the immune response
- Side effects are stronger after second doses because the body mounts a stronger response when it has already seen the virus

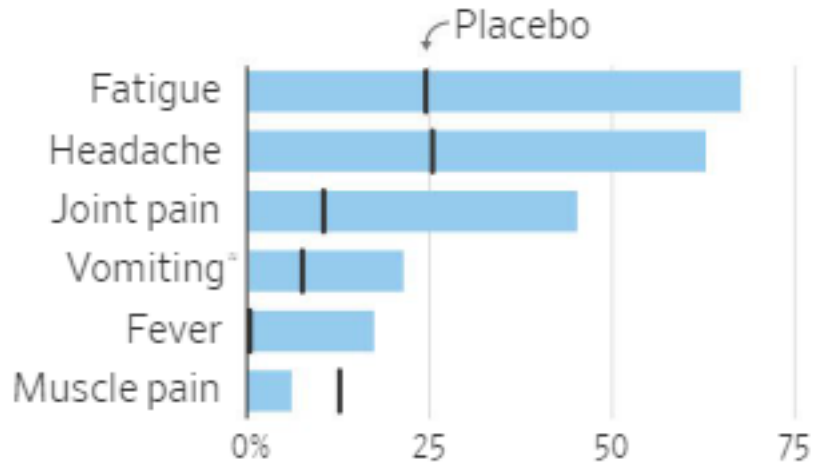
Vaccine Side Effects



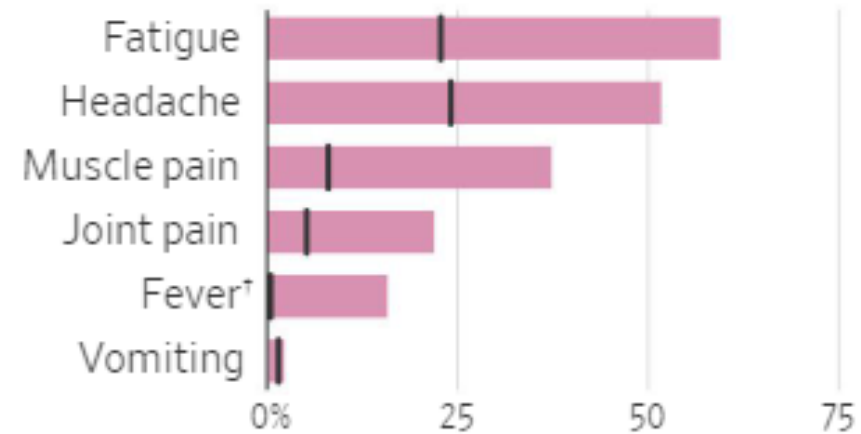
Side Effects

Frequency of adverse reactions within seven days after the second dose of Covid-19 vaccines, in Phase 3 clinical trials. Most side effects were mild or moderate.

MODERNA VACCINE



PFIZER



Source: FDA

*Including nausea †100.4°F or higher

Note: For ages 18-64 for Moderna, 18-55 for Pfizer

Side Effects - Considerations



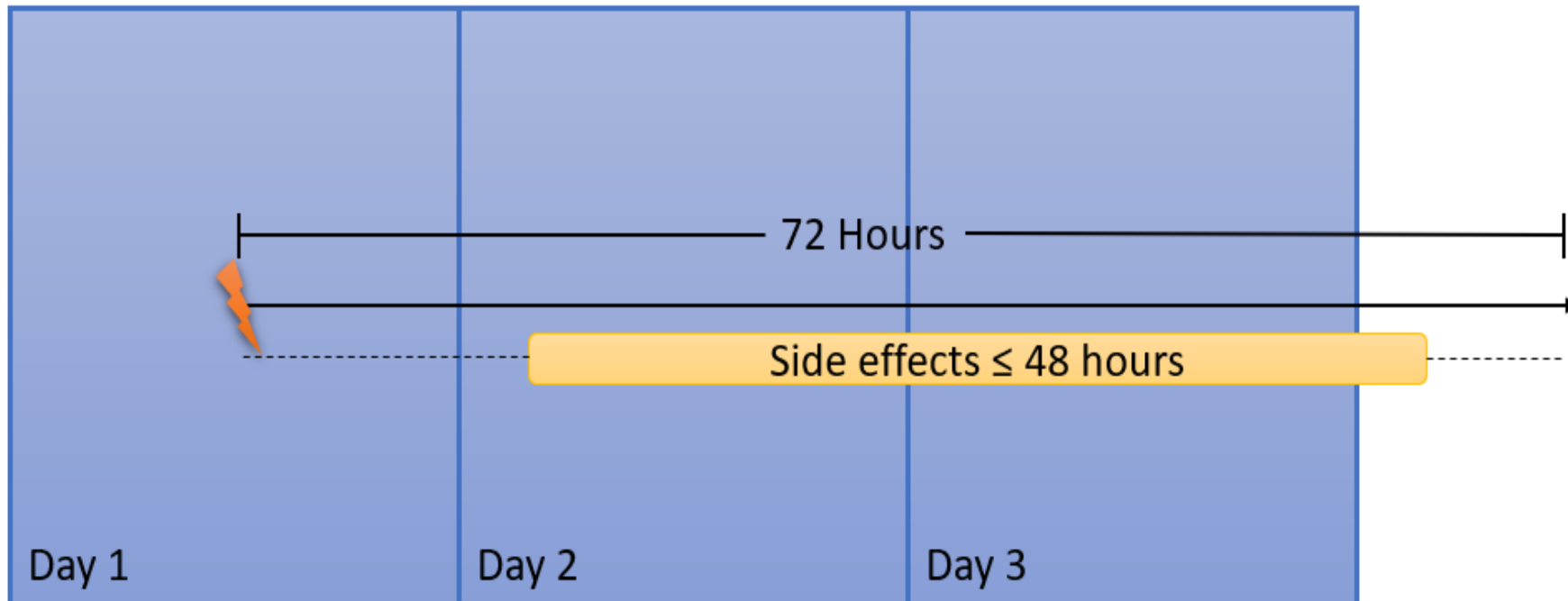
- Potential impact on school staffing
 - If concerned, encourage Friday or Saturday immunization

Vaccine Side Effect Policy



- Individuals who are vaccinated against SARS-CoV-2 (the virus that causes COVID-19) and develop post-vaccine side effects consistent with COVID-19 vaccination can return to work without viral testing if:
 - They feel well enough and are willing to work
 - They are afebrile*
 - Their side effects are limited to those associated with COVID-19 vaccination and not COVID-19 disease (cough, shortness of breath, sore throat, or change in smell or taste)
- If an individual's COVID-19 vaccination side effects persist for more than 2 days from onset to resolution and exceed 72 hours from vaccination, they should be excluded from work and viral testing should be considered.
- *Individuals with fever measured as 38°C or 100.4°F or higher should be excluded from work and viral testing should be considered if the fever persists **for more than 2 days. NOTE: For severe healthcare worker shortages, CDC allows staff to continue working with fever as long as other COVID-19 symptoms are absent.**

Vaccine Side Effect Policy



Who Should Be Vaccinated



- If you are sick with COVID-19 or other acute illness wait until better
- If you are exposed to COVID-19, wait until quarantine is over
- Pregnant and breastfeeding individuals can get vaccinated and should discuss with their provider
- You can still get vaccinated if you have had COVID-19
- Wait 90 days after antibody therapy to be vaccinated, 14 days after other vaccines

What about allergies?



- Individuals with history of severe allergic reactions:
 - Can be vaccinated except allergy to mRNA vaccine as below
 - Should be observed for 30 minutes after
- Individuals with history of severe reaction to mRNA vaccines, components of mRNA vaccines or polysorbate should not be vaccinated unless working with their HCP or allergy specialist

Other health questions

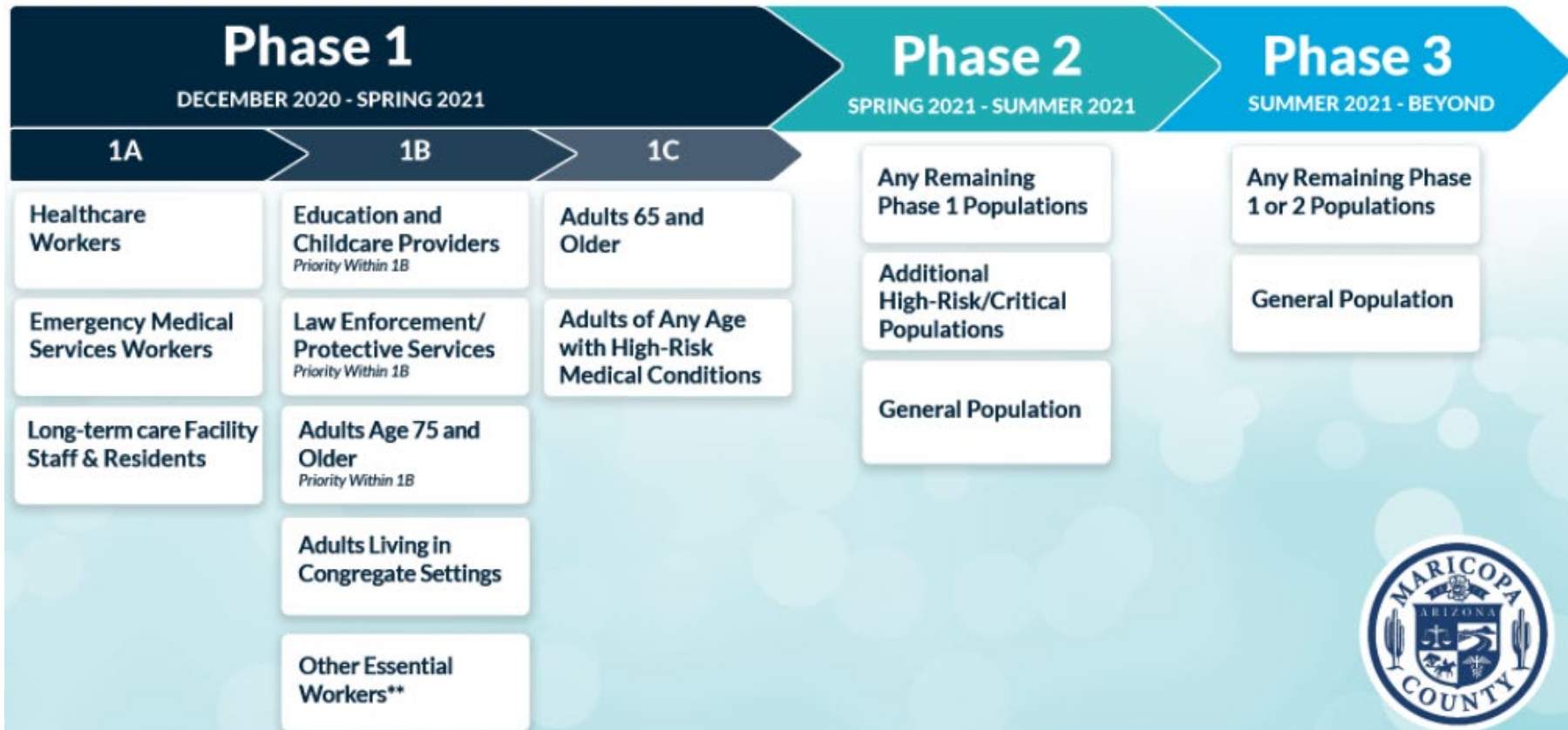


- Consult with your medical provider if you have questions about a specific health condition
- Some have heard that if they have ever had Collagen injections, Breast implants, fillers they should not get the vaccine..
- How long will immunity last? Will I need to get a COVID shot every year?
- If I get the vaccine, will getting infected with the virus affect the vaccine?

What is the plan to get vaccine out?



Potential COVID-19 Vaccine Prioritization Overview*



*Distribution groups and timelines of phases shown are tentative. This information is subject to change due to future vaccine distribution guidance recommendations, FDA approval of vaccines, and vaccine allocation/availability.
 **Power and utility workers; food and agriculture-related occupations; transportation and moving material occupations; state and local government workers providing critical services; other essential workers



Phase 1A populations



- Paid and unpaid persons serving in healthcare settings who have the potential for direct or indirect exposure to patients or infectious (includes EMS)
 - Included school health personnel

Phase 1B Populations



- Phase 1B started Monday, January 11 at Regional POD sites
- Priority groups in 1B include
 - Education (K-12) and childcare workers
 - Law enforcement
 - Individuals 75 years and older

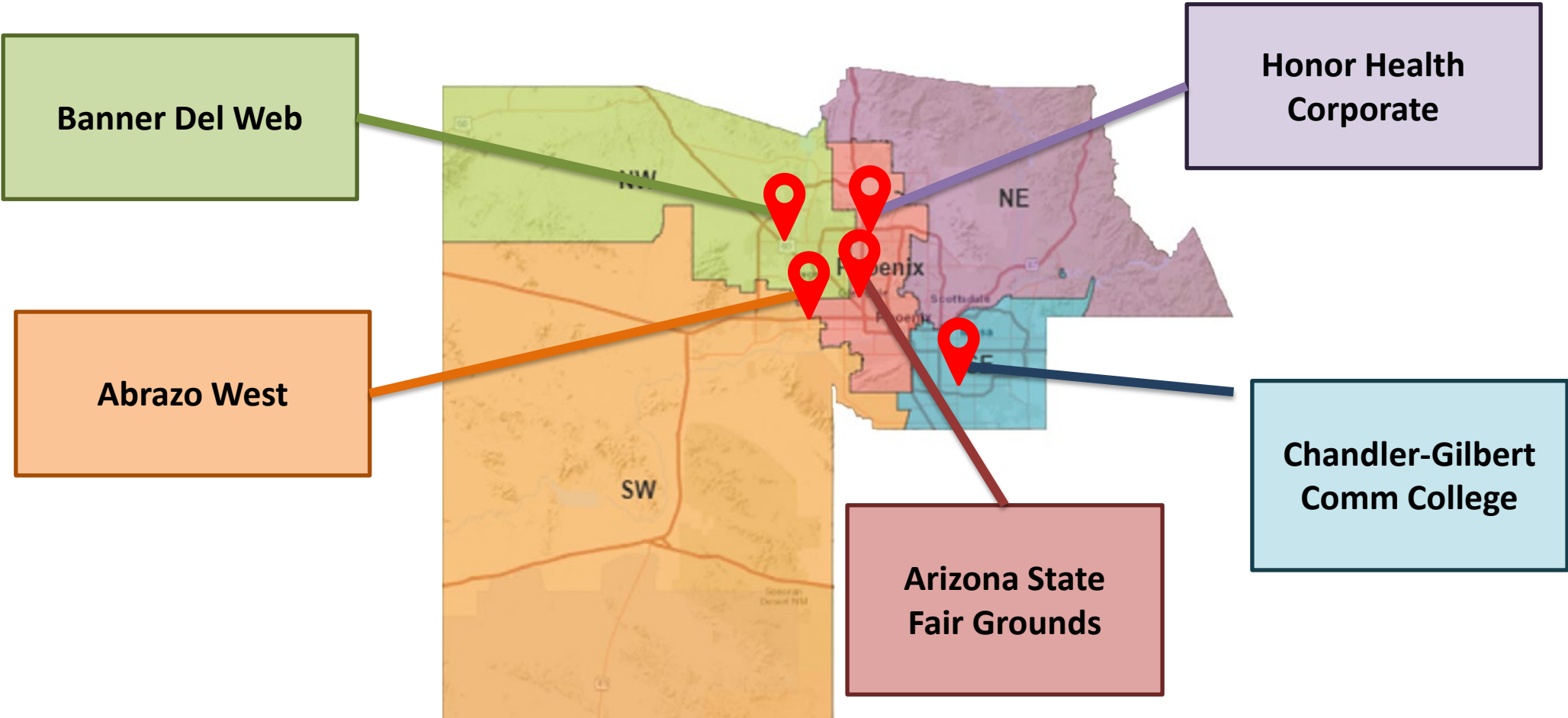
K-12 / Childcare Vaccination Plan



- Starting January 11, K-12 and childcare staff can register for available appointments at PODs
 - <https://www.maricopa.gov/5651/Phase-1B>
 - Availability will be limited as phase 1a receives first and second doses
 - Expanding access at PODs
- AZ School Administrators Association (AZSA) is working with districts, charters and private schools to organize closed PODs administered by retail pharmacy partners
 - Childcare workers will also be vaccinated at these sites



Phase 1A maximized resources



Are there other places to get vaccine?



- 1A – PODs only
- 1B
 - Adding additional PODs to vaccinate prioritized groups, including state run POD at State Farm Stadium
 - Pharmacies primarily to vaccinate those 75 and over
 - Contracting with vaccine providers to vaccinate Law Enforcement
 - K-12 and childcare mini-PODs

K-12 and Child Care – Who is Included?



- All staff-anyone who is required to be on-site at school for their work
 - Teachers and administration
 - Food service workers
 - Custodial staff
 - Transportation staff
 - Substitute teachers
 - Student teachers
- Proving eligibility-Schools and pharmacy partners will communicate acceptable forms of identification

Registration Questions



- How and where do I sign up?
- How will district POD locations and registration be communicated?
- Why am I getting 1a or 2nd dose wording on my registration?
- How long will it take to get all teachers and staff vaccinated?
- How do I sign up for a 2nd dose?

POD QUESTIONS from survey



- How can we set up a closed POD or to get buddied with a POD?
 - Charter schools and private schools
 - AZSA will identify school groups and points of contact
- Why PODs and not pharmacies?
- Will district PODs be scheduled for after school hours?
- How do I provide proof of immunization to my workplace?
- Is there a cost to the individual? To the school?

Questions



- Will the vaccine be required for a return to in-person instruction?
 - For staff?
 - For students?
- Can a district apply for on-boarding?
- What is the potential timeline for district PODs to become active?
- How will rural districts and schools get staff vaccinated?
- Will MCDPH assist schools with PODs?
- If I get my first dose at a MCDPH POD, can I get my 2nd dose at school POD?

Hold strong on mitigation measures!



- It takes 1-2 weeks after the 2nd dose to be considered fully vaccinated
- No vaccine is 100% effective
- This is a new vaccination, so information is limited on how well the vaccine works in the general population.
- We are still learning :
 - How much it may reduce disease, severity, or transmission
 - How long protection lasts

Continue to follow all current guidance on reducing the spread of COVID-19

Check for updates and FAQs!



<https://www.maricopa.gov/5641/COVID-19-Vaccine>

Frequently Asked Questions

ELIGIBILITY AND SCHEDULING

- + How will people be screened for eligibility?
- + What will be the process to register?
- + What are some things I can do ahead to prepare for registering?
- + How long will appointments be open at PODs for Phase 1B?
- + Do I have to be a resident to be eligible for vaccination?
- + I'm having issues making an appointment using the ADHS vaccine scheduling website. What should I do?
- + Why do I need to make an appointment?
- + Why are appointments so limited at PODs?
- + What options for vaccination are available for seniors who are 75 years and older?
- + Why are pharmacies only vaccinating those who are 75 and older?

Home » Departments » Public Health » Diseases We Track » Coronavirus Disease 2019 » COVID-19 Vaccine

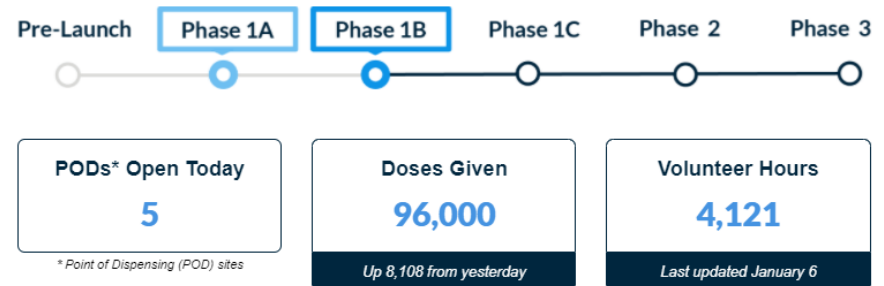
COVID-19 VACCINE

En Español

COVID-19 VACCINE STATUS UPDATE:

- o **Vaccine Scheduling now Open to Phase 1B** Though availability will vary by day, scheduling is now open to those remaining from Phase 1A and to prioritized groups in Phase 1b. For links to registration and important information about scheduling, including specific vaccination updates for priority 1B groups (e.g., K-12, law enforcement, 75+), please see the [Phase 1B page](#). If you're a healthcare worker, go to [Phase 1A](#).
- o **How Will Vaccine Be Prioritized?** Deciding who gets the COVID-19 vaccine when its in limited supply is a data-driven process with many considerations to ensure fairness and equity across diverse populations. Maricopa County is following the guidance of the Arizona Vaccine and Antiviral Prioritization Advisory Committee for its [vaccine prioritization plan](#). View VAPAC recommendations [here](#).
- o **The FDA granted an Emergency Use Authorization (EUA) for Pfizer's COVID-19 vaccine on Dec. 11 and for Moderna's COVID-19 vaccine on Dec. 18.** Learn [What is an EUA?](#) Find FDA fact sheets for both vaccines [here](#). [Note, POD locations are using Pfizer vaccine.]
- o **Safety is a top priority in delivering a vaccine.** The U.S. has the safest, most effective vaccine supply in its history. [Read why.](#)

This dashboard is updated daily around 9 a.m.
Dashboard last updated: Jan. 13, 2021



Keep in Touch!



- Regular content will resume next week, including vaccine updates
- **May be changing out webinar platform – please watch for an email early next week**
- Email us:
 - COVID19Vaccine@maricopa.gov
 - SchoolHealth@maricopa.gov
- Website <https://www.maricopa.gov/5460/Coronavirus-Disease-2019>