

85322, 85343, 85326, 85354, 85337, 85139, 85333

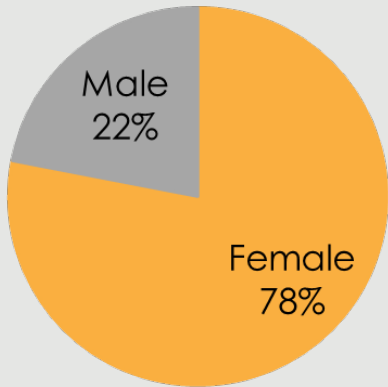


ZONE 22

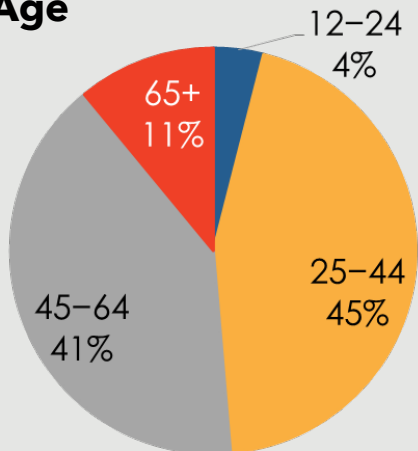
Responses to the 2019 Community Health Assessment Survey from the residents of Zone 22.

Who took the survey in Zone 22?

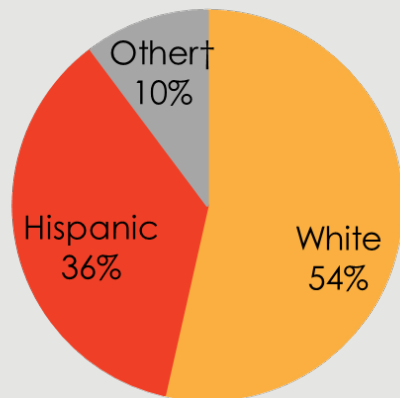
Gender



Age



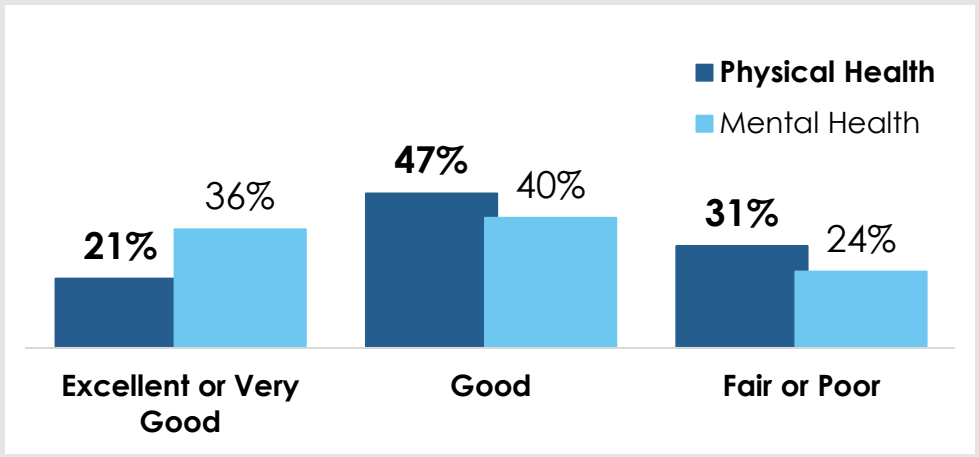
Race



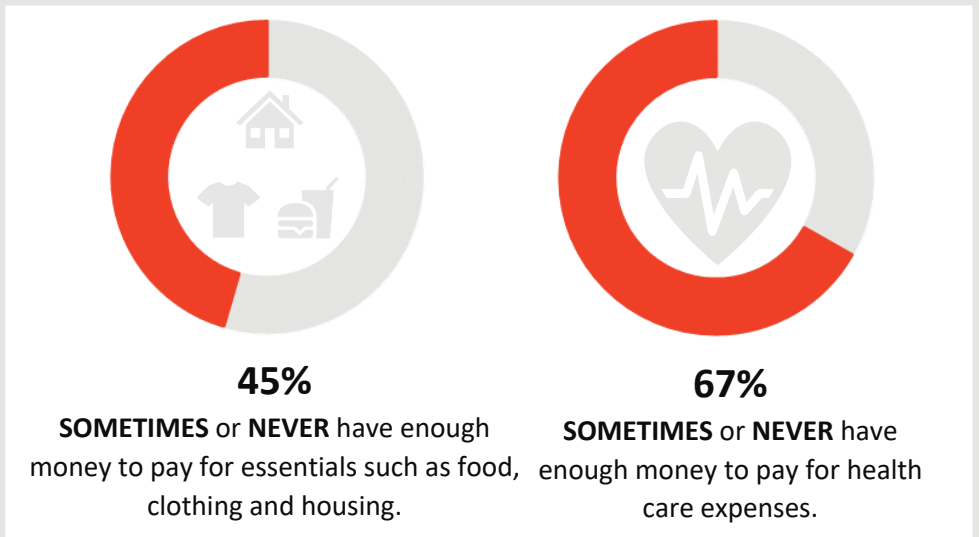
23%

reported a household income of **less than \$20,000.**

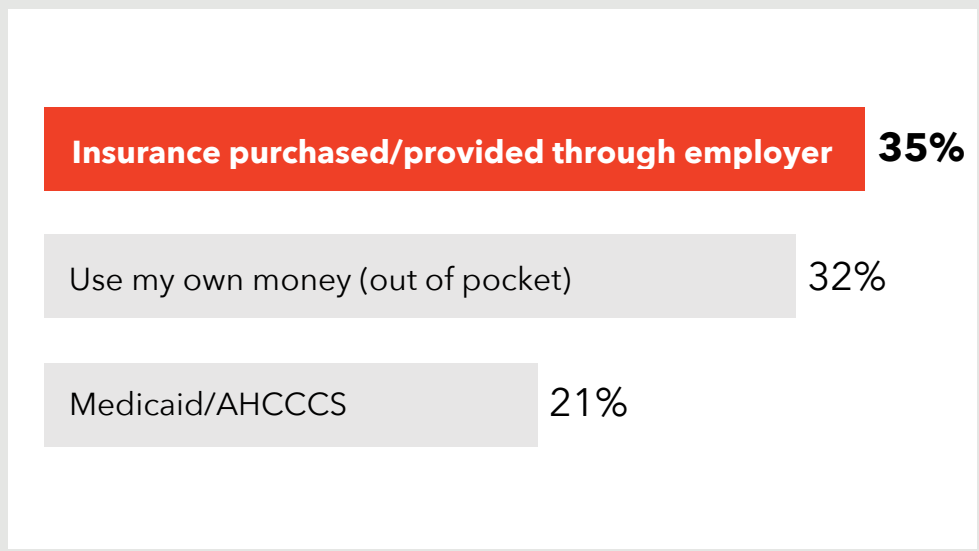
How do respondents in Zone 22 rate their Physical and Mental Health?



Do respondents in Zone 22 struggle each month to pay for medical care and/or necessities?



How do residents in Zone 22 pay for health care?



255 surveys collected.

Some demographic data may total over 100% due to rounding.

† Due to low response rates, the 'Other' category includes 'Asian', 'American Indian/Native American', 'Black or African American', 'Multi-racial', and 'Other' responses or race/ethnicity.

Zone 22 Survey Respondents

TOP 3 COMMUNITY STRENGTHS



Access to parks and recreation sites	-----	41%
Access to public libraries and community centers	-----	40%
Low crime/safe neighborhoods	-----	29%

TOP 3 COMMUNITY ISSUES



Lack of good jobs	-----	40%
Illegal drug use	-----	33%
Lack of public transportation	-----	31%

TOP 3 BARRIERS TO HEALTHCARE



Distance to provider	-----	42%
Difficulty finding the right provider for my care	-----	27%
Underinsured	-----	24%

TOP 3 HEALTH CONDITIONS



Alcohol or substance abuse	-----	53%
Overweight or obesity	-----	45%
High blood pressure or cholesterol	-----	37%

Want More?

- Find out how your city compares to other cities in Maricopa County.
- Submit a Data Request to obtain regional survey results.
- Join Synapse to partner with local organizations.

Contact:

[Eileen Aguilar](#)

(602) 859-4763

Eileen.Aguilar@maricopa.gov

Data Request:

<https://www.maricopa.gov/data-request>