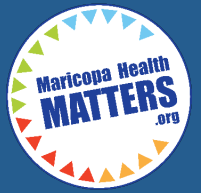


85351, 85381

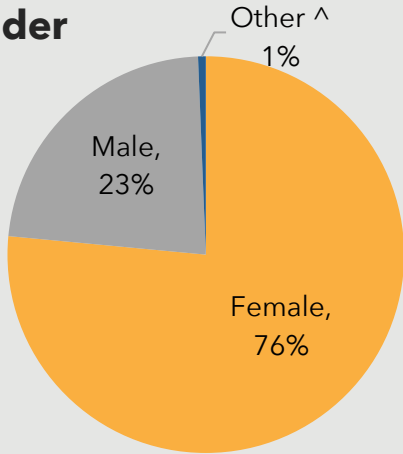
ZONE 18

Responses to the 2019 Community Health Assessment Survey from the residents of Zone 18.

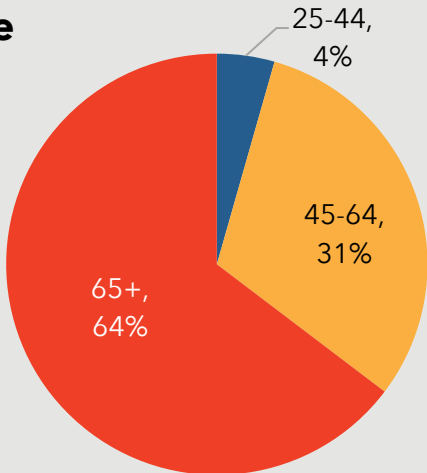


Who took the survey in Zone 18?

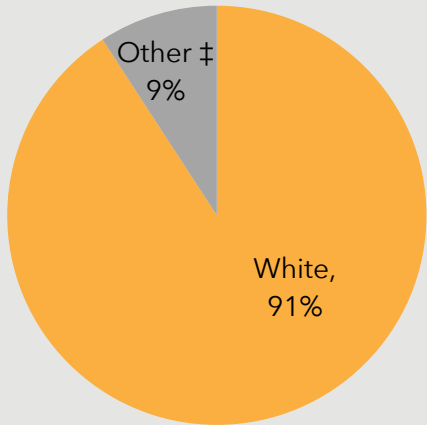
Gender



Age



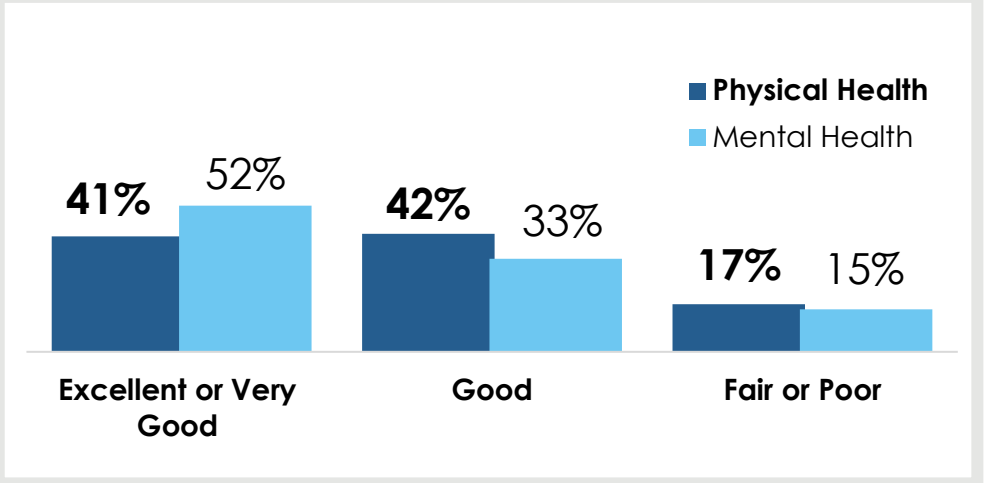
Race



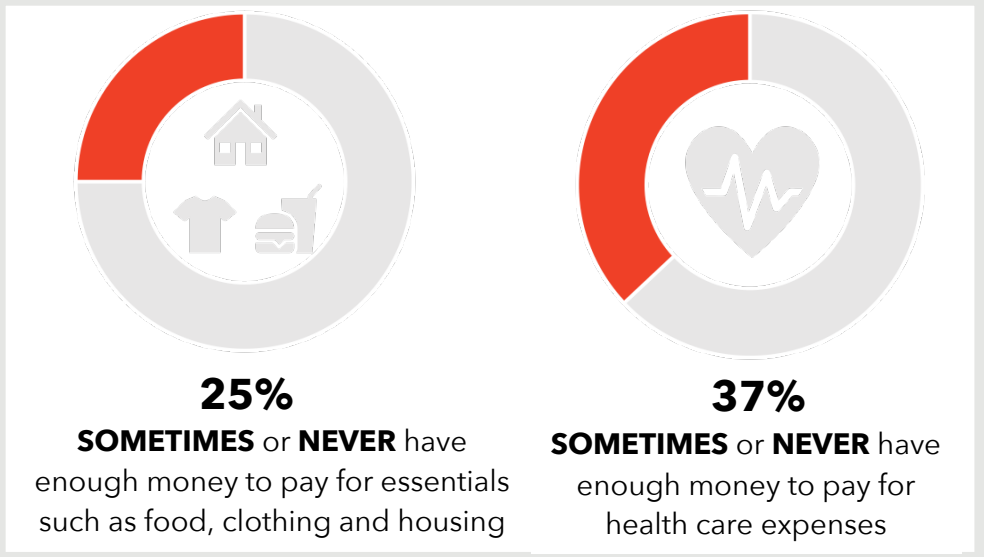
15%

reported a household income of **less than \$20,000.**

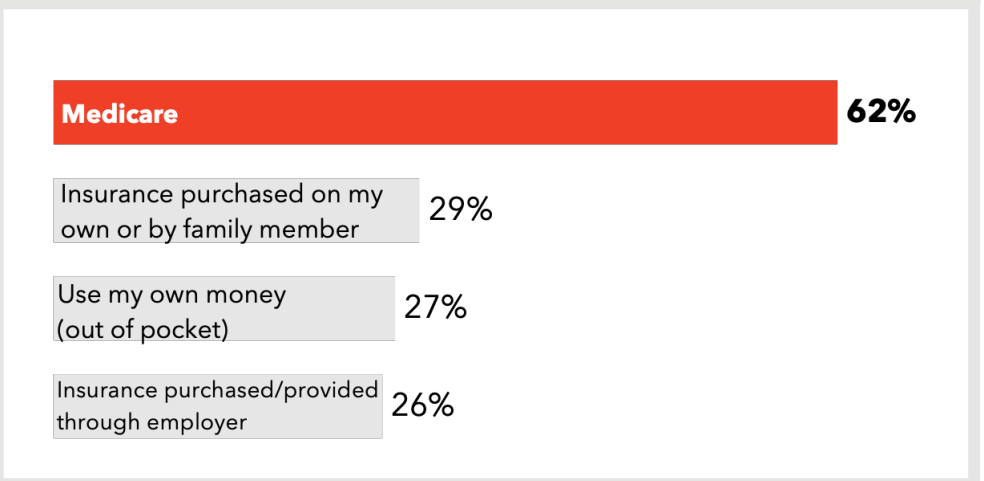
How do respondents in Zone 18 rate their Physical and Mental Health?



Do respondents in Zone 18 struggle each month to pay for medical care and/or necessities?



How do residents in Zone 18 pay for their health care?



320 surveys collected.

^ The 'Other' category includes 'Transgender' responses for gender.

‡ Due to low response rates, the 'Other' category includes 'Asian', 'Black or African American', 'American Indian or Native American', 'Multi-racial', 'Hispanic or Latino', 'Native Hawaiian or Other Pacific Islander', and 'Other' responses or race/ethnicity.

TOP 3
COMMUNITY
STRENGTHS



Access to fitness programs ----- 66%

Clean environments and streets ----- 63%

Access to medical care ----- 60%

TOP 3
COMMUNITY
ISSUES



Distracted driving ----- 54%

Lack of public transportation ----- 38%

Elder abuse/neglect ----- 35%

TOP 3
BARRIERS TO
HEALTHCARE



Difficulty finding the right provider for my care ----- 38%

Underinsured ----- 35%

Other ----- 21%

TOP 3
HEALTH
CONDITIONS



Heart disease and stroke ----- 54%

Arthritis ----- 49%

High blood pressure or cholesterol ----- 47%

Want More?

- Find out how your city compares to other cities in Maricopa County.
- Submit a Data Request to obtain regional survey results.
- Join Synapse to partner with local organizations.

Contact:

Eileen Aguilar
(602) 859-4763

Eileen.Aguilar@maricopa.gov

Data Request:

<https://www.maricopa.gov/data-request>

