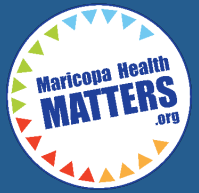


85308, 85310, 85083, 85024, 85085, 85027, 85087, 85086

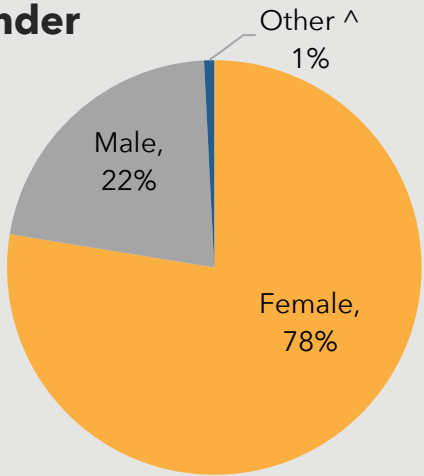


# ZONE 16

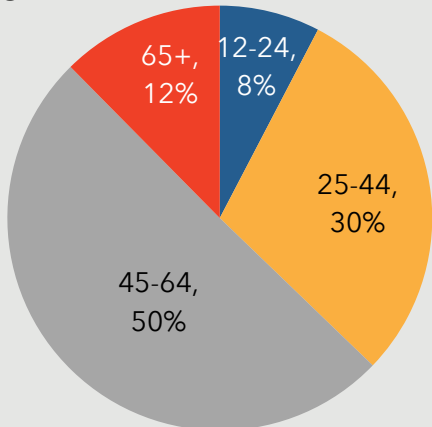
Responses to the 2019 Community Health Assessment Survey from the residents of Zone 16.

## Who took the survey in Zone 16?

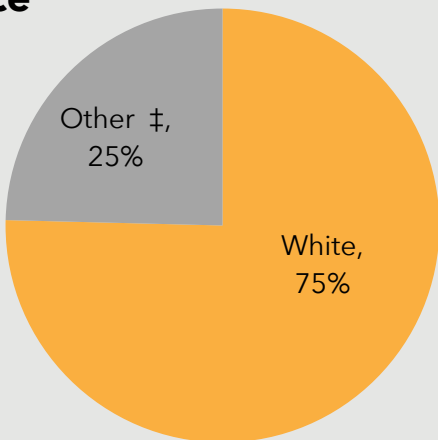
### Gender



### Age



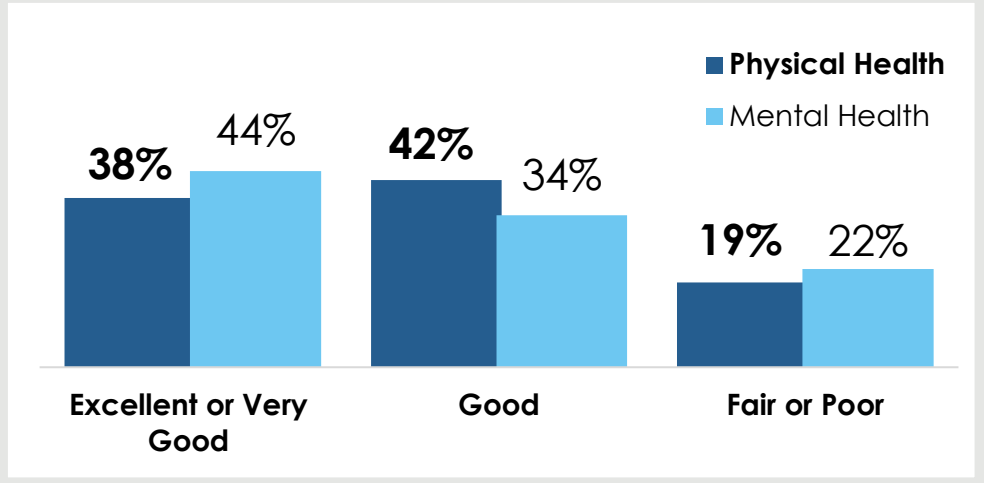
### Race



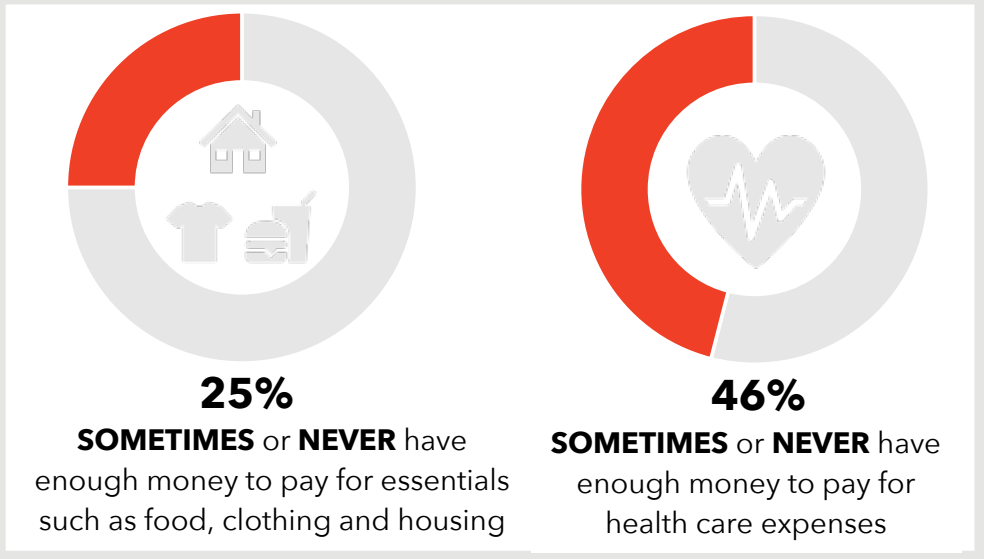
**10%**

reported a household income of **less than \$20,000.**

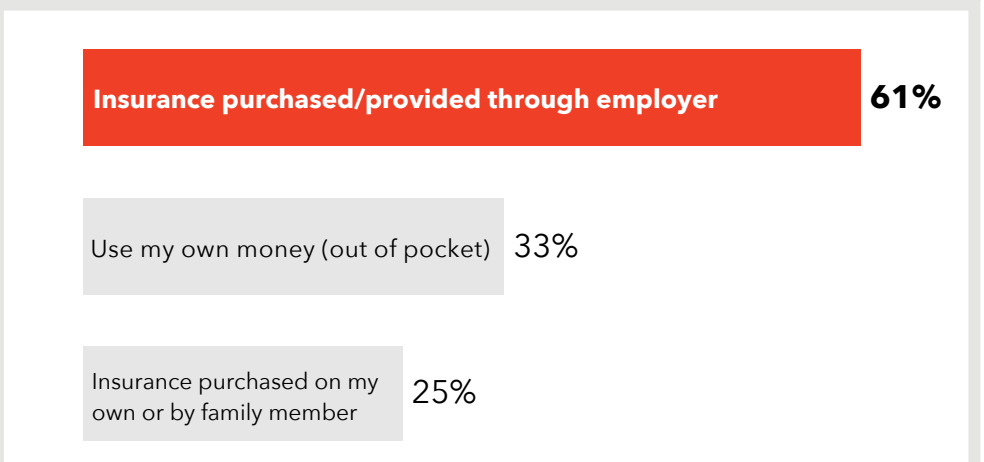
## How do respondents in Zone 16 rate their Physical and Mental Health?



## Do respondents in Zone 16 struggle each month to pay for medical care and/or necessities?



## How do residents in Zone 16 pay for their health care?



381 surveys collected.

^ The 'Other' category includes 'Transgender' responses for gender. Some demographic data will total over 100% due to rounding.

‡ Due to low response rates, the 'Other' category includes 'Asian', 'Black or African American', 'American Indian or Native American', 'Multi-racial', 'Hispanic or Latino', 'Native Hawaiian or Other Pacific Islander' and 'Other' responses or race/ethnicity.

TOP 3  
COMMUNITY  
STRENGTHS



Access to parks and recreation sites	----- 61%
Access to public libraries and community centers	----- 51%
Clean environments and streets	----- 46%

TOP 3  
COMMUNITY  
ISSUES



Distracted driving	----- 52%
Homelessness	----- 28%
Bullying/peer pressure	----- 26%

TOP 3  
BARRIERS TO  
HEALTHCARE



Underinsured	----- 38%
Inconvenient office hours	----- 36%
Difficulty finding the right provider for my care	----- 32%

TOP 3  
HEALTH  
CONDITIONS



Overweight/obesity	----- 49%
Alcohol/substance abuse	----- 47%
Mental health issues	----- 43%

**Want More?**

- Find out how your city compares to other cities in Maricopa County.
- Submit a Data Request to obtain regional survey results.
- Join Synapse to partner with local organizations.

**Contact:**

Eileen Aguilar  
(602) 859-4763

Eileen.Aguilar@maricopa.gov

Data Request:

<https://www.maricopa.gov/data-request>

