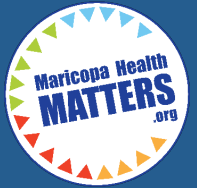


85013, 85012, 85004, 85003

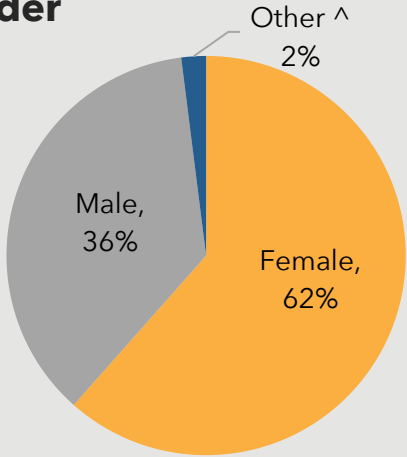
# ZONE 13

Responses to the 2019 Community Health Assessment Survey from the residents of Zone 13.

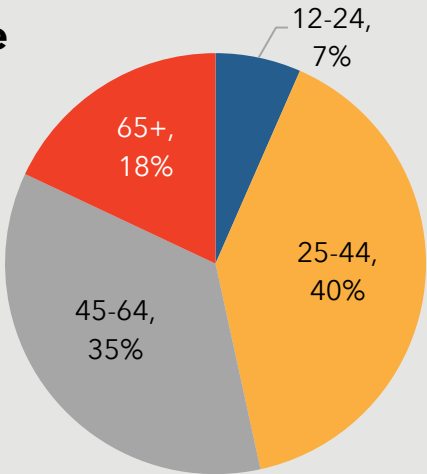


## Who took the survey in Zone 13?

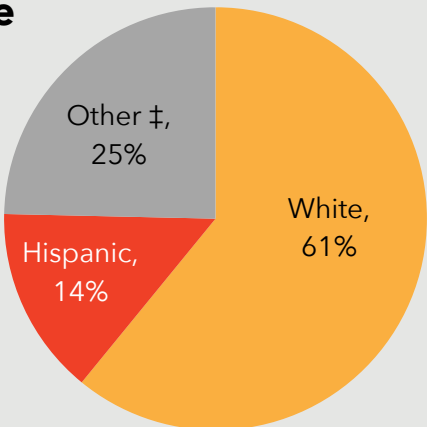
### Gender



### Age



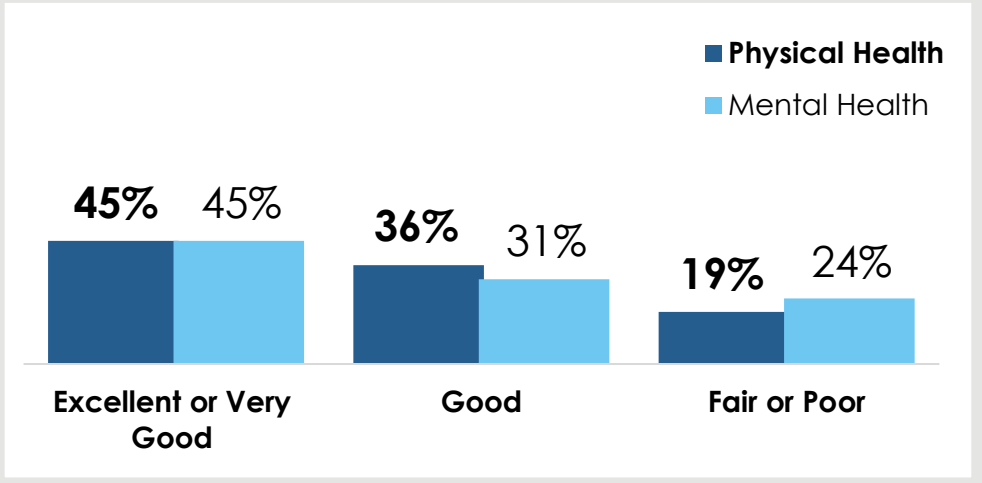
### Race



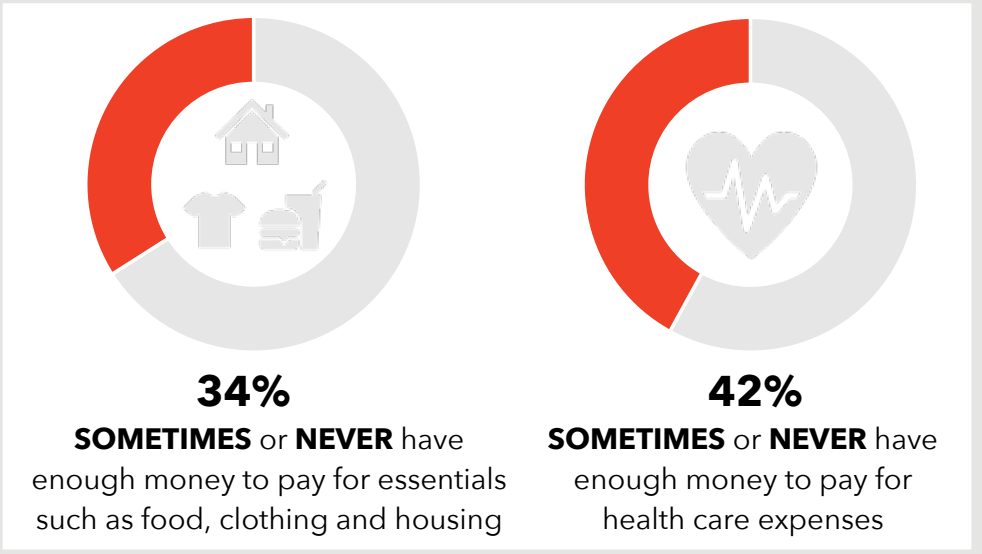
**23%**

reported a household income of **less than \$20,000.**

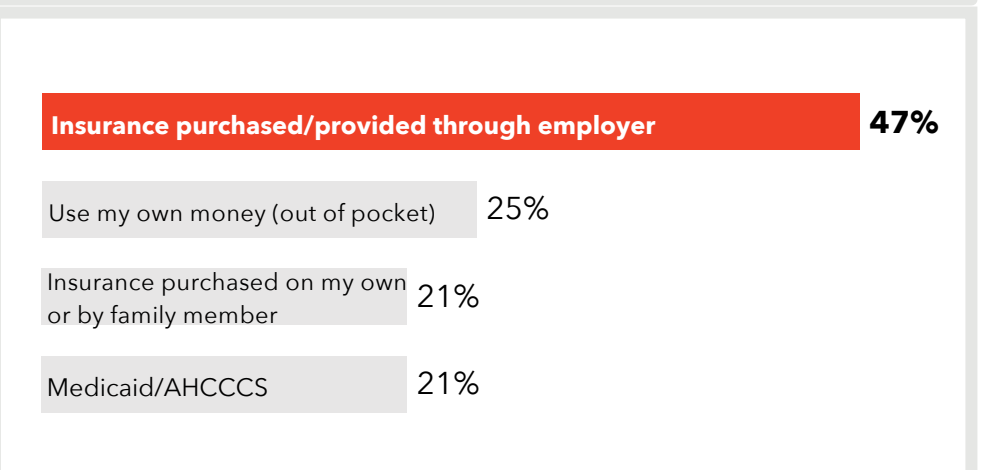
## How do respondents in Zone 13 rate their Physical and Mental Health?



## Do respondents in Zone 13 struggle each month to pay for medical care and/or necessities?



## How do residents in Zone 13 pay for their health care?



356 surveys collected.

^ The 'Other' category includes 'Transgender' responses for gender.

‡ Due to low response rates, the 'Other' category includes 'Asian', 'Black or African American', 'American Indian or Native American', 'Alaskan Native', 'Multi-racial', 'Native Hawaiian or Other Pacific Islander' and 'Other' responses or race/ethnicity.

TOP 3  
COMMUNITY  
STRENGTHS



Access to public transportation	-----	50%
Access to cultural events	-----	49%
Access to public libraries and community centers	-----	49%

TOP 3  
COMMUNITY  
ISSUES



Homelessness	-----	54%
Distracted driving	-----	38%
Lack of affordable housing	-----	38%

TOP 3  
BARRIERS TO  
HEALTHCARE



Underinsured	-----	36%
Difficulty finding the right provider for my care	-----	32%
Inconvenient office hours	-----	25%

TOP 3  
HEALTH  
CONDITIONS



Alcohol/substance abuse	-----	64%
Mental health issues	-----	56%
Overweight/obesity	-----	33%

**Want More?**

- Find out how your city compares to other cities in Maricopa County.
- Submit a Data Request to obtain regional survey results.
- Join Synapse to partner with local organizations.

**Contact:**

[Eileen Aguilar](#)

(602) 859-4763

[Eileen.Aguilar@maricopa.gov](mailto:Eileen.Aguilar@maricopa.gov)

[Data Request:](#)

<https://www.maricopa.gov/data-request>