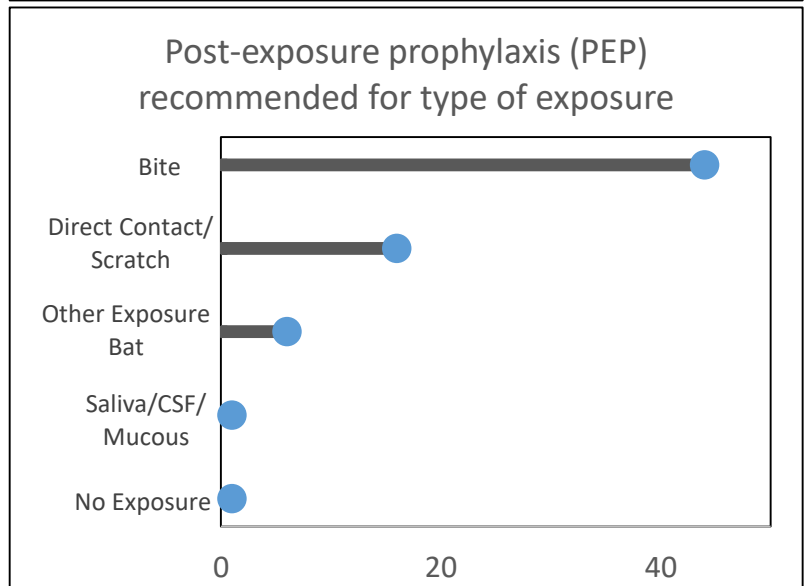
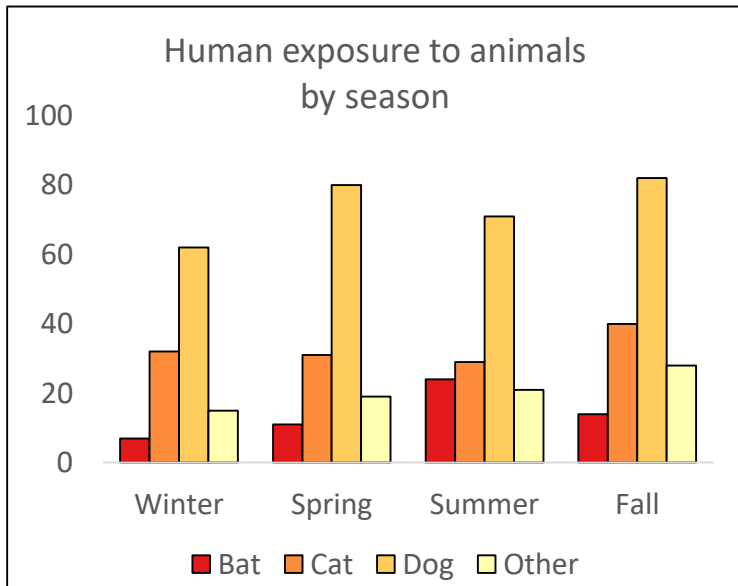
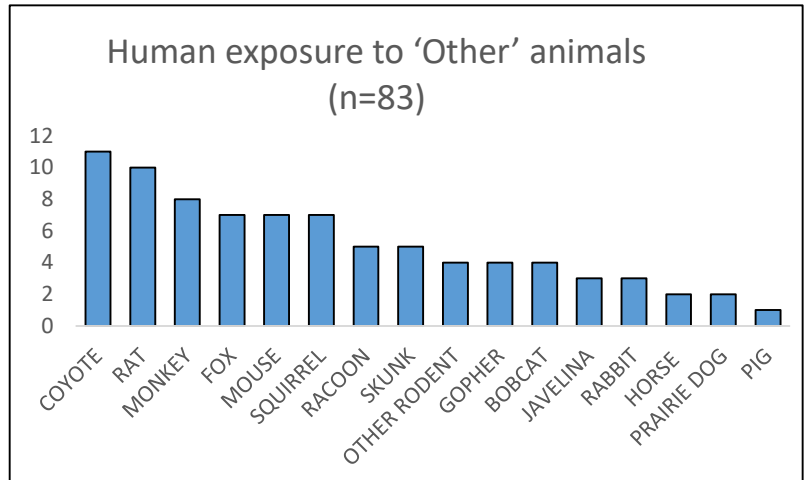
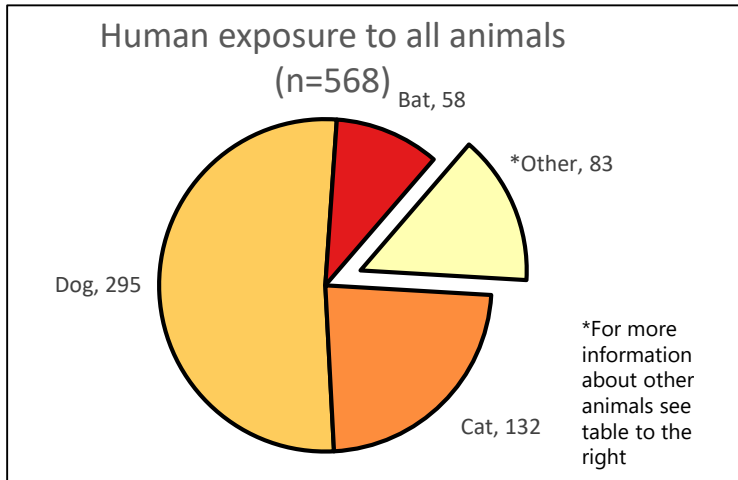


# Maricopa County Rabies Assessment 2017

## End of Year Report

Maricopa County Department of Public Health (MCDPH), Office of Epidemiology, has a comprehensive surveillance system that tracks the number of rabies risk assessments conducted. The number of assessments conducted has declined over the last 5 years. The number of recommendations for post exposure prophylaxis in 2017 was 68, which was higher than the 5 year average of 57. For information about rabies transmission, symptoms, diagnosis, treatment, and prevention, please visit [www.mcrabies.org](http://www.mcrabies.org).

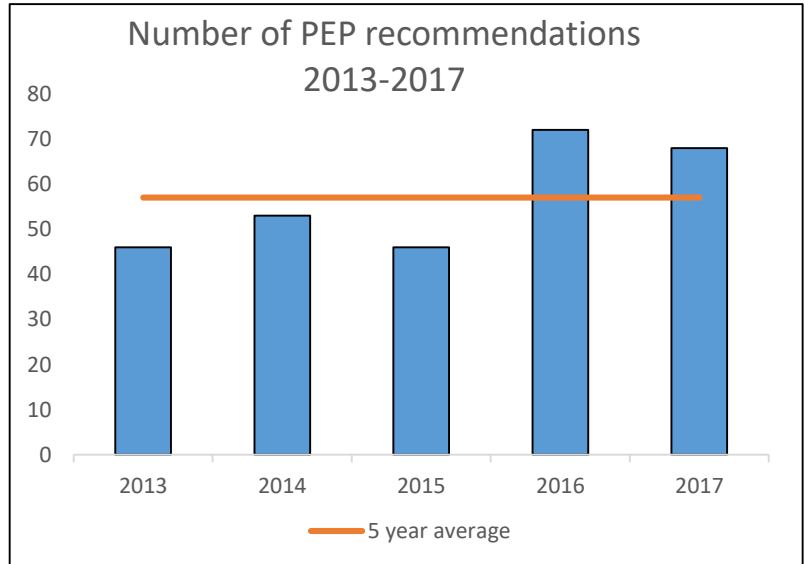


PEP was recommended for 68 (12%) of rabies assessments in 2017

Species indicated in PEP recommendation by MCDPH

Bat	27	Fox	2
Bobcat	2	Javelina	3
Cat**	2	Monkey	7
Coyote	6	Raccoon	1
Dog**	17	Skunk	1

\*\*Dog and cat exposures occurred in instances of unexplained progressive neurologic symptoms in untested animal, animal interaction with wildlife, or in areas outside of Maricopa County where domestic animal rabies occurs.



**To report a suspected rabies case or to receive a rabies assessment call  
(602) 747-7111 (24 hours a day)**